




**AN ISO 9001:2015  
CERTIFIED COMPANY**



# **ANANDHA FABRICATIONS (CBE) PRIVATE LIMITED.**

**ENGINEERS, FABRICATORS, CONSULTANTS & CONTRACTORS**

 **+91 97860 15055**

 **[www.anandhafab.com](http://www.anandhafab.com)**

 **[info@anandhafab.com](mailto:info@anandhafab.com)**



# About Us

Anandha Fabrications was founded in the year 1983 by Mr.Kandhaswami, an expert in Fabrication and Machining with over forty five years of experience in the field. 37 years since its establishment, the company has grown steadily, and is now a market leader in its services.

We have been certified by the India Boilers Regulations and is an ISO 9001 : 2015 organization. The reputation of the company has been built and bettered by the astute management of Mr. Shivaraman Kandhaswami and the dedicated workmanship of his experienced workforce.

## Infrastructure

Anandha Fabrications is located on premises of 2.5 acres with state of the art manufacturing facility. The skilled work force can take on any critical heavy fabrication and machining work and provide products as per customer's needs. The factory can handle a single job of up to 60,000 Kgs in one go.

Anandha Fabrications has the distinction of being one of the few heavy fabrication units with complete Machining, Heat Treatment, NDT, Grid-Blasting and painting facilities. The factory also has two heat-treatment furnaces, two high-capacity hydraulic presses and all types of welding machines. Along with infallible quality, timely delivery is of utmost importance. Anandha has power generators to ensure uninterrupted power supply, thereby ensuring the customers get their orders on time.

# Aerial Photo of our Manufacturing Facility



## Location

Coimbatore is one of the leading industrial cities in India with its products extending from motors, pump sets, automobile spares, spinning yarn, weaving, textile exports, chemical pumps and non standard machines for heavy industries. There are many industrial estates in and around this city.

Anandha Fabrications is located at SF.No 637/1/P, Thudiyalur Rd, Saravanampatti Post, Coimbatore-641035, which is in the nerve centre of this bustling city known as the Manchester of the East.

This locality where Anandha fabrication is functioning is merely 10 kms. from the Coimbatore International Airport and well connected by road and rail. The nearest sea port is four hours drive from Coimbatore at Cochin in the neighbouring state Kerala. This establishment has a corporate office to handle all marketing related functions in the United States and to manage export operations.



# List of Machineries

MACHINERY DESCRIPTION	MAKE	SIZE & CAPACITY	QTY
<b>CNC Flame/Plasma Cutting Machine</b>			
CNC Oxy-Fuel with Alfa torch and Omniflow Control to cut plates upto 400mm thickness	Messer (Germany)	Multitherm Eco 4000mm x 8000mm long	1 No
CNC Plasma Cutting machine to cut SS plates upto 30mm thickness	Hypertherm	Hypertherm retrofitted to Messers Multitherm Eco	1 No
Bandsaw Cutting machine for steel sections	VEEKAY	Upto 300mm diameter (VK-12)	1 No
<b>Machine Shop - Lathe / Boring / Drilling / Vertical Turning Lathe</b>			
Vertical Turret Lathe	SAHIL	Table Dia 3500mm X Swing Dia 4200mm X Height 2200mm	1 No
Vertical Turret Lathe	BETTS	Table Dia 2450 X Swing Dia 2850mm X Height 1000mm	1 No
Horizontal Turning Lathe	Rajendra Machineries	Swing Over Bed Dia. 1600mm X L 5000mm / Swing in Gap Dia. 2600mm X 600mm	1 No.
Horizontal Boring Machine	KARAM	100 Spindle Table 1 M X 1 - 1 M Admit between center	1 No
Lathe	MMT Make	L 1400 X D 250mm	1 No
Lathe	NAVABHARTH	L 1400 XD 230mm	1 No
Lathe	Kirlosker	L 1400 X D 230mm	1 No
Centre Lathe	Budapest	14" Centre Height 10Ft	1 No
Radial Drilling Machine	BATLIBOI	BR624	1 No
Radial Drilling Machine	HMT	RM - 62	1 No
Radial Drilling Machine	HMT	RM - 52	1 No
Shaping Machine	Shimato, Japan	24" stroke length	1 No
Core-cutter drilling machine	Broach Cutter	Upto Dia 100mm x 90 depth	2 Nos
Core-cutter drilling machine	Broach Cutter	Upto Dia 35mm x 50 depth	12 Nos
Pillar Type Drilling Machine	EIFCO Make	1 1/4" capacity	1 No
Electric Portable Drilling Machines	Wolf Make	1 1/4" Capacity	1 No

MACHINERY DESCRIPTION	MAKE	SIZE & CAPACITY	QTY
<b>Press &amp; Furnace</b>			
Hydraulic Press	Riley Bury	1000 ton	1 No
Hydraulic Press	Riley Bury	700 ton	1 No
Gas/Oil Fired Furnace with Wesman Blower	Self Make	2M X 2M X 2M	1 No
<b>Bending Machine(Rolling)</b>			
Plate Bending Machine	W.M.W.Germany	2500 X 32mm	1 No
Plate Bending Machine	T.E.E.Bombay	1600 X 22mm	1 No
<b>Welding Machines</b>			
TIG Welding Machine	Technocraft	400 A	2 nos
Advani Oerlikon Make CO2 Welding Machine	Advani Make	MAX/MIG 400A-600A	2 Nos
CO2 Welding Machine (MIG)	KEMPII	400A-500A	20 Nos
DC Welding Generator(Tryodine)	Various Makes	Various Size	5 Nos
IGBT Inverter DC Arc Welding Machine (ARC)	L&T, WYM & Panasonic	ZUBARC	22 Nos
Submerged Arc Welding Machine (SMAW)	ADOR	1200 Amps	2 Nos
<b>Gas Cutting Machines</b>			
SS PLASMA CUTTING	Hypertherm PowerMax1650	32mm Thk. SS	1 No
Pug Gas Cutting Machine	ADOR		10 Nos
Gas Cutting Set	IOL Make		15 Nos
CNC Oxy-Fuel with Alfa torch and Omniflow Control to cut plates upto 400mm thickness	Messer (Germany) Make	Multitherm Eco 4000mm x 8000mm long	1 No
<b>Grinding Machines</b>			
Portable Grinding Machine	Metabo	AG7	20 Nos
Portable Grinding Machine	Metabo	AG5	15 Nos
Portable Grinding Machine	Metabo	GQ44	3 Nos
Tool Grinding Machine	Speed Master	Bench Grinding	2 Nos
<b>Lifting Tools</b>			
Mobile Crane	Escorts	14 Tons Capacity	3 Nos
Moving Gantry with A Frame	Self Make	25 Ton Capacity	2 No
EOT Crane	Self Make	15 Ton Capacity	2 Nos
EOT-Crane	Self Make	10 Tonnes	1 Nos
EOT - Crane	MM Engineers	5 Tonnes	3 Nos
EOT - Crane	MM Engineers	2 Tonnes	4 Nos
<b>Other Machineries &amp; Capabilities</b>			
Grit Blasting booth	Self-made	3000 sq.Ft booth	2 Nos
Air-less Painting system	GRACO	Express MARK IV	1 No
Air Compressor	ElgiMake	10HP/1000 Litre	1 No
Air Compressor	KND	750Litre	1 No
Air Compressor	AIRTEK	200Litre	1 No
Hydraulic Test Pump	BOSCH	100 Kgf/Cm2	1 No
Electrode Drying Oven	MEMCO	Stationary Type	1 No
Electrode Drying Oven - Portable	MEMCO	-	17 Nos
Torque Wrench	Power Master	50-95 Kg/M	1 No
Diesel Generator	POWERICA	250 KVA	1 No
Diesel Generator	POWERICA	110 KVA	1 No



**KOSO**

**KUKA**  
ROBOTICS

**ABB**

# Clientele

Anandha Fabrications has several satisfied customers across the world. The clients to which Anandha has exported Fabricated and Machined components include among them, major organisations in all the leading industrial countries such as the USA, Canada, France, Germany and Japan. Their products also find clients in Turkey and Sri Lanka.

Anandha is also a regular supplier to multiple Public Sector Units and Government Organisations like the missile manufacturers BRAHMOS Aerospace, Tamil Nadu Newsprint Ltd, BHEL, BEML, Fluid Controls Research institute (FCRI), Indian Railways, Instrumentation Ltd, and so on.

Anandha Fabrications has the distinction of being the sole sub-contractor to BRAHMOS Aerospace for supplying the Ground Resting Units used in launching missiles. Anandha has supplied threading support rollers to the Salem Steel Plant of the Steel Authority of India Limited. Anandha had the pleasure of providing 4500mm knife-gate valves with Hardox liner for Coal Pulvarizer Plant at Neyveli Lignite Corporation. Anandha is also one among few approved suppliers to manufacture huge Transformer tanks (100 KVA and above) to the Tamil Nadu Electricity Board. Anandha is also a regular supplier to multiple Public Sector Units and Government Organisations.

## Products

Anandha Fabrications is an ISO 9001:2015 company involved in manufacturing high quality Pressure vessels, Kilns, Heat exchangers, Butterfly valve bodies, Earth moving equipment components, Robot risers, Storage Tanks, Process Equipments, Static & Rotary Equipments as per ASME, ASTM, DIN, IS, TEMA, API 610 standards.

We are an IBR (Indian Boilers Regulation) approved facility. We have great experience in exporting fabricated components to several countries including USA, Canada, Germany, Japan, Sri Lanka and Turkey.



Anandha Fabrications has the expertise to manufacture quality products conforming to various international codes and standards like ASME, IS, TEMA, BS under the inspection of inspection agencies like IBR, IRS, NPOL, TUV and RITES.

Anandha Fabrications has a team of qualified and experienced engineers at all levels, working sincerely to produce best quality products to meet various clients requirements with on time delivery, utmost quality and competitive price.





**72000L Water-Sprinkler tank (25MT)**  
used in Coal mines. Tank size is 7300 X 5800 X 3600 mm.



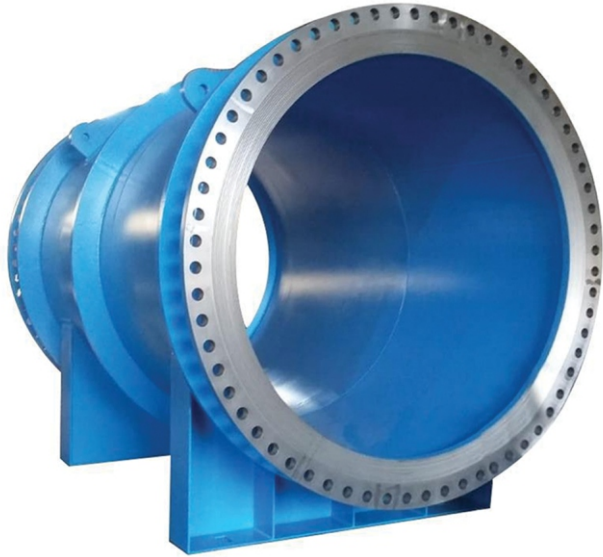
**Transformer Tanks (16MA Model) 8000 Kgs**



**FURNACE LADLE CAR (35 MT) supplied to JINDAL Steels to carry 250 MT molten metal. Equipped with Forged and Hardox wheels with 6m long Ground floating shaft and Gear coupler.**



**2nd Largest Autoclave in India was Fabricated by us. Dia 3800 X 6500 mm long. Weight: 28000 kgs. Sa516Gr70 material. Complete with automation.**



**72" Valve body (S355J2 Material grade)**  
Supplied to Desalination plants in the Middle-East.  
Size 2300 X 3200 X 3500 mm.  
Weight: 7000 kgs.



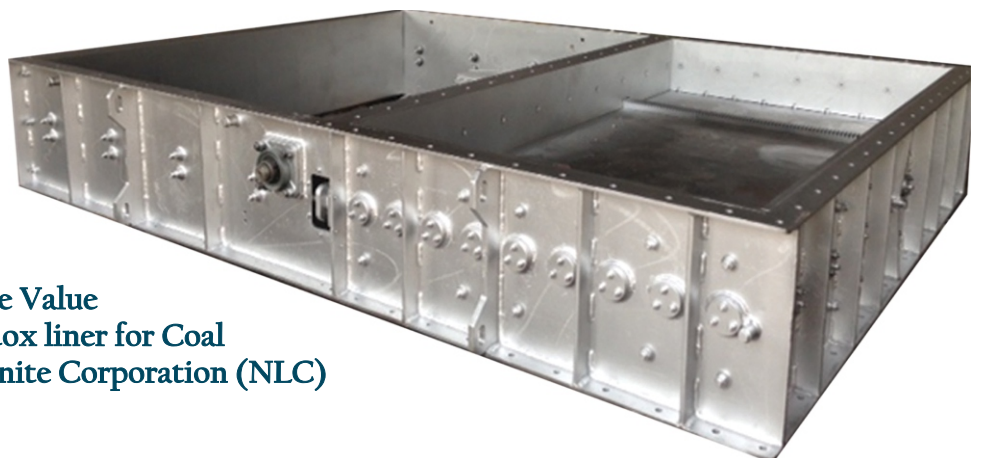
**Magnetic frame used in Locomotives**  
supplied to GE Transportation, Erie,  
Pennsylvania. Main body hot-formed from  
60 mm thick plate.



**Robot Riser**  
Exported to Automotive Plants  
in USA CANADA, GERMANY  
300mm to 3000 Height



**1200mm SS Fabricated**  
Single Wedge Valve (Body & Bonnet)



**2200mm X 4500mm Knife Gate Value**  
with Stainless steel Gate, Hardox liner for Coal  
Pulvarizer Plant at Neyveli Lignite Corporation (NLC)



**PT/LT Chamber for Testing Missile Components  
(Indian Defence)**



**Assembled 2200mm Dia Butterfly Valve  
Exported to France (S355 J2 Grade)**



# ANANDHA FABRICATIONS (CBE) PRIVATE LIMITED.

ENGINEERS, FABRICATORS, CONSULTANTS & CONTRACTORS



## ANANDHA FABRICATIONS (CBE) PRIVATE LIMITED

+91 422 - 2666334, +91 422 - 2666034    +91 97860 15055    info@anandhafab.com    www.anandhafab.com

Thudiyalur Road, Saravanampatti (Post), Coimbatore, INDIA 641 035,

Our Office in USA: 141 Chopin st, Troy, Michigan 48083, USA.

anandhafab@gmail.com



www.pioneerproductions.in  
+9193629 30877